

Stars_n_Stripes

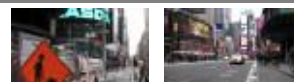


GN.01	Filenames	T2V001002_Stars_n_Stripes_1920x1080p.yuv T2V001102_Stars_n_Stripes_1280x720p.yuv T2V001202_Stars_n_Stripes_1920x1080i.yuv
GN.02	Horizontal x vertical size(s)	1920x1080; 1280x720
GN.03	Progressive / Interlaced	'p' file suffix = progressive; 'i' file suffix = interlaced
GN.04	Video format	YUV planar 4:2:0
GN.05	Bits per sample	8 (for each of Y, U, V)
GN.06	Video description	US flag flapping in the breeze; close-up
GN.07	Principal purposes	Motion vectors of large areas moving rapidly and whole frame moving
GN.08	Duration (mins:secs:frames) at 25 fps *	00:24:20
GN.09	No. of frames (1080i 1 less *)	620
GN.10	1080i generation / artefacts	Frame blend
GN.11	Original video format	1080p25
GN.12	File size(s) on disk (MB)	1,928 : 857 : 1,928
GN.13	CF words	CF-bright colours, CF-large_monochromatic, CF-movement_across
GN.14	Associated audio types	MPEG1 Layer II 48kHz 16bit stereo 384kbps Constant Bit Rate 16bit uncompressed 48kHz stereo WAV
GN.15	Associated audio filenames	T2a001x02_Stars_n_Stripes_act_MP1LII.mpa T2a001y02_Stars_n_Stripes_act_unc.wav
GN.16	Associated audio description	Actual audio recorded with video
GN.17	Audio duration	Same as video (video played at 25fps)

Clip features		Details	SCENE SUBJECTS		
LIGHT CONDITIONS			SS.01	People	-
LC.01	Bright sunlight	-	SS.02	Faces	-
LC.02	Bright daylight	All	SS.03	Vehicles	-
LC.03	Dull daylight	-	SS.04	Buildings	-
LC.04	Shaded areas	-	SS.05	Trees	-
LC.05	Indoors bright	-	SS.06	Text	-
LC.06	Indoors dark	-	SS.07	Talking head	-
LC.07	Twilight	-	SS.08	Water	-
LC.08	Sunrise/sunset	-	SS.09	Leaves/grass	-
LC.09	Night	-	SS.10	Sky	White
LC.10	Backlighting	-	SS.11	Clouds	-
LC.11	Large brightness change	-	SS.12	Patterns	-

SS.13	Round objects	-	GM.07	Scroll	-
SCENE PROPERTIES			GM.08	Angled	-
SP.01	Depth of field	Shallow	GM.09	Zoom in	-
SP.02	Out-of-focus	Some	GM.10	Zoom out	-
SP.03	Fine lines / moiré patterns	-	GM.11	Hand-held camera	Smooth
SP.04	Reflections	-	SUBJECT MOTION		
SP.05	Scene change	-	SM.01	Movement out of picture	-
SP.06	Fades	-	SM.02	Movement into picture	-
SP.07	Transitions	-	SM.03	Movement across picture	Lots, fast
SP.08	Slow/fast motion	-	SM.04	Movement up/down	-
COLOURS & CONTRAST			SM.05	Diagonal movement	-
CC.01	Light picture	-	SM.06	Subjects behind foreground objects	-
CC.02	Dark picture	-	SM.07	Low movement	-
CC.03	Bright colours	All	SOUND CONTENT		
CC.04	Dull colours	-	SC.01	Talking	Background noise
CC.05	Fine detail/moiré patterns	-	SC.02	Movement	-
CC.06	High contrast areas	Several	SC.03	Vehicles	Traffic
CC.07	Large monochromatic areas	All	SC.04	Wind	-
CC.08	Graininess	-	SC.05	Music	Some
CC.09	Black background	-	SC.06	Background	-
CC.10	White background	-	SC.07	Other	-
GLOBAL MOTION			SOUND CHARACTERISTICS		
GM.01	Fast track/pan	-	SH.01	Mono/ stereo	Stereo
GM.02	Tracking in/out	-	SH.02	Average volume	Mid
GM.03	Tracking	-	SH.03	Level changes	-
GM.04	Panning	-	SH.04	Clear/ distorted	-
GM.05	Tracking (following)	-			
GM.06	Fast scroll	-			

Times_Square



GN.01	Filenames	T2V001003_Times_Square_1920x1080p.yuv T2V001103_Times_Square_1280x720p.yuv T2V001203_Times_Square_1920x1080i.yuv
GN.02	Horizontal x vertical size(s)	1920x1080; 1280x720
GN.03	Progressive / Interlaced	'p' file suffix = progressive; 'i' file suffix = interlaced
GN.04	Video format	YUV planar 4:2:0
GN.05	Bits per sample	8 (for each of Y, U, V)
GN.06	Video description	Somewhat irregular pan to the right, around Times Square
GN.07	Principal purposes	Global motion of frame to the right with some fast-moving objects in opposite direction
GN.08	Duration (mins:secs:frames) at 25 fps *	00:29:14
GN.09	No. of frames (1080i 1 less *)	739
GN.10	1080i generation / artefacts	Frame blend
GN.11	Original video format	1080p25
GN.12	File size(s) on disk (MB)	2,299 : 1,022 : 2,299
GN.13	CF words	CF-panning, CF-complex_scene
GN.14	Associated audio types	MPEG1 Layer II 48kHz 16bit stereo 384kbps Constant Bit Rate 16bit uncompressed 48kHz stereo WAV
GN.15	Associated audio filenames	T2a001x03_Times_Square_act_MP1LII.mpa T2a001y03_Times_Square_act_unc.wav
GN.16	Associated audio description	Actual audio recorded with video
GN.17	Audio duration	Same as video (video played at 25fps)

Clip features		Details	SCENE SUBJECTS		
LIGHT CONDITIONS			SS.01	People	Many
LC.01	Bright sunlight	-	SS.02	Faces	Few
LC.02	Bright daylight	-	SS.03	Vehicles	Cars
LC.03	Dull daylight	All	SS.04	Buildings	Many
LC.04	Shaded areas	-	SS.05	Trees	-
LC.05	Indoors bright	-	SS.06	Text	Some
LC.06	Indoors dark	-	SS.07	Talking head	-
LC.07	Twilight	-	SS.08	Water	-
LC.08	Sunrise/sunset	-	SS.09	Leaves/grass	-
LC.09	Night	-	SS.10	Sky	White
LC.10	Backlighting	-	SS.11	Clouds	-
LC.11	Large brightness change	-	SS.12	Patterns	Some

SS.13	Round objects	-
SCENE PROPERTIES		
SP.01	Depth of field	Deep
SP.02	Out-of-focus	-
SP.03	Fine lines / moiré patterns	-
SP.04	Reflections	Glass - some
SP.05	Scene change	-
SP.06	Fades	-
SP.07	Transitions	-
SP.08	Slow/fast motion	-
COLOURS & CONTRAST		
CC.01	Light picture	-
CC.02	Dark picture	-
CC.03	Bright colours	Areas
CC.04	Dull colours	-
CC.05	Fine detail/moiré patterns	-
CC.06	High contrast areas	Several
CC.07	Large monochromatic areas	-
CC.08	Graininess	-
CC.09	Black background	-
CC.10	White background	-
GLOBAL MOTION		
GM.01	Fast track/pan	-
GM.02	Tracking in/out	-
GM.03	Tracking	-
GM.04	Panning	Slow right
GM.05	Tracking (following)	-

GM.06	Fast scroll	-
GM.07	Scroll	-
GM.08	Angled	-
GM.09	Zoom in	-
GM.10	Zoom out	-
GM.11	Hand-held camera	-

SUBJECT MOTION

SM.01	Movement out of picture	Some, fast
SM.02	Movement into picture	Some, fast
SM.03	Movement across picture	Some, fast
SM.04	Movement up/down	-
SM.05	Diagonal movement	-
SM.06	Subjects behind foreground objects	Few
SM.07	Low movement	-

SOUND CONTENT

SC.01	Talking	Very quiet
SC.02	Movement	-
SC.03	Vehicles	Traffic
SC.04	Wind	-
SC.05	Music	-
SC.06	Background	Traffic
SC.07	Other	-

SOUND CHARACTERISTICS

SH.01	Mono/ stereo	Stereo
SH.02	Average volume	Mid
SH.03	Level changes	-
SH.04	Clear/ distorted	-